

<b>Meeting:</b>	<b>Safer Bromley Partnership Strategic Group</b>
<b>Date:</b>	<b>21<sup>st</sup> March 2013</b>
<b>Subject:</b>	<b>Domestic Violence Statistical Update 2010-2012</b>
<b>Author:</b>	<b>Pratheepan Jeyapragasam, Crime Analyst</b> pratheepan.jeyapragasam@bromley.gov.uk

## **1 SUMMARY**

1.1 This report provides an update in relation to Domestic Abuse

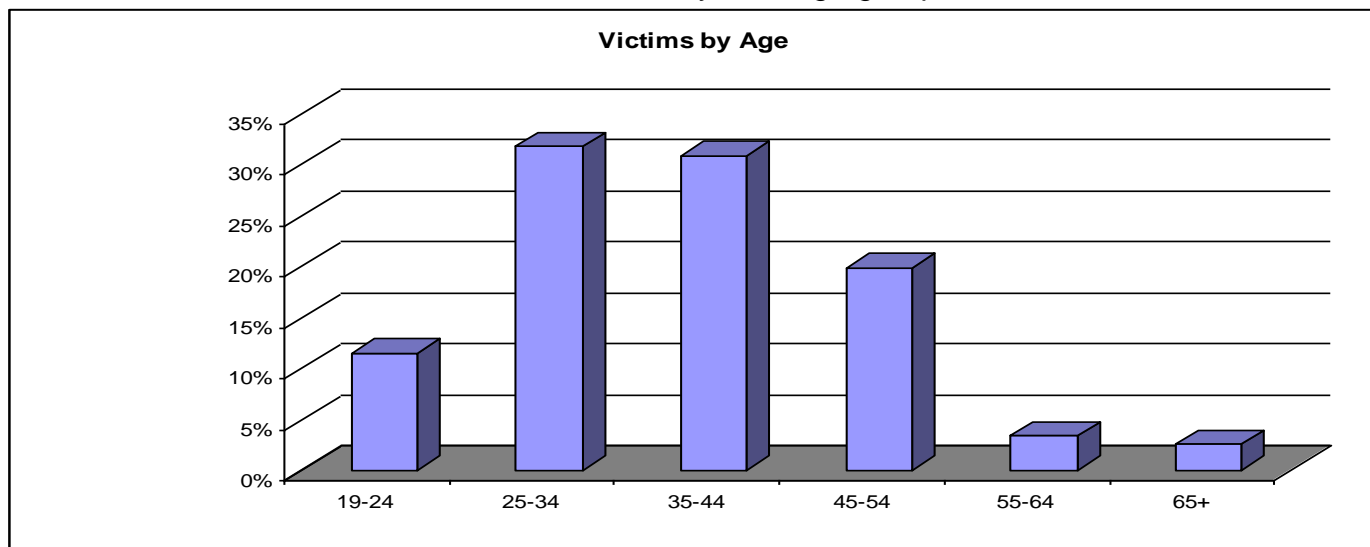
## **2 RECOMMENDATION**

- 2.1 The Strategic Group is asked to note the information contained within this report and comment on the key findings
- 2.2 The Strategic Group is asked to support continuing provision of services and the development of more targeted services based upon further analysis when more data becomes available.

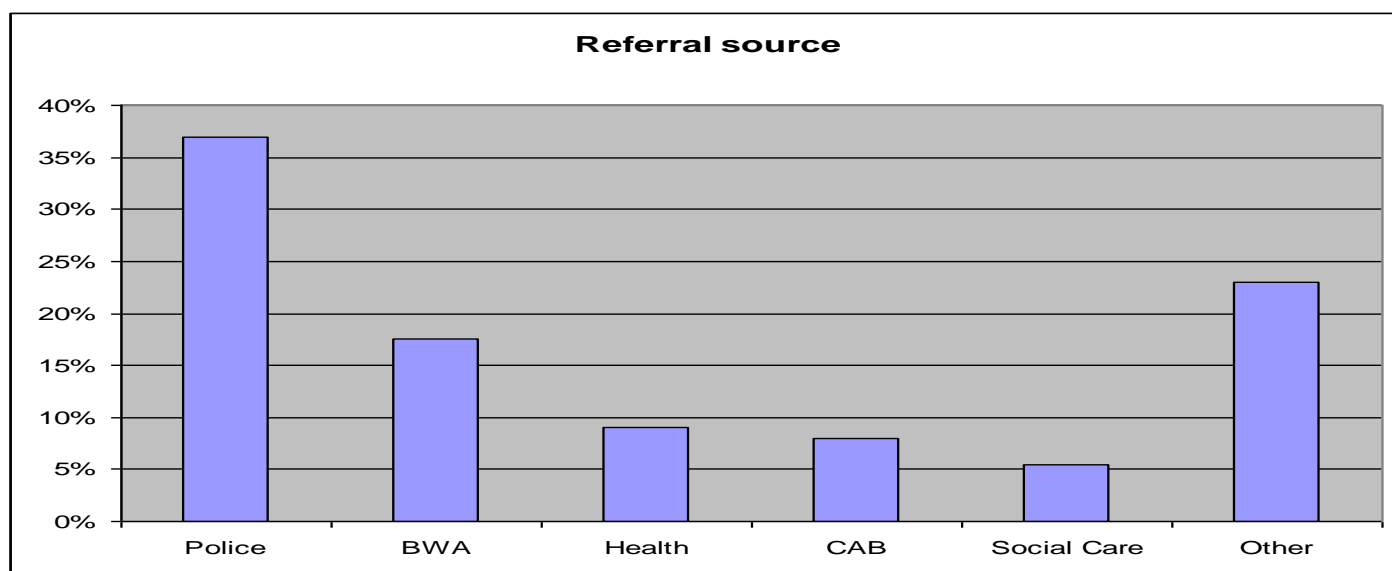
## **3 BACKGROUND INFORMATION**

- 3.1 The last Safer Bromley Partnership Performance Management Report revealed an 18% increase in Common Assault offences which included Domestic Abuse.
- 3.2 This review investigates the reasons for this increase and identifies particular trends. The data range used for the local analysis part of this investigation is from 1<sup>st</sup> April 2010 to 31<sup>st</sup> March 2012 (2 years).
- 3.3 Data used for this analysis is from the Victims of domestic abuse who attended the One Stop Shop in Bromley.
- 3.4 There were 832 cases referred in the last two years.

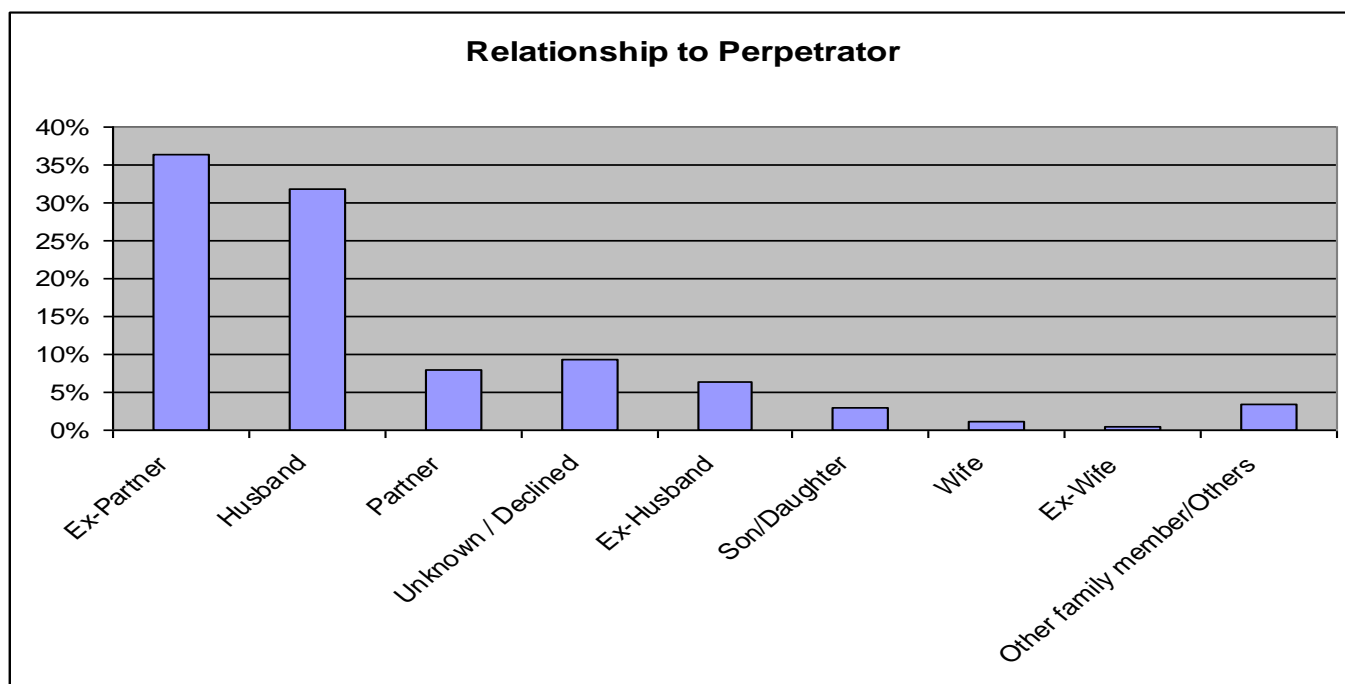
3.5 Below chart shows Domestic Abuse victims by their age groups



3.6 Majority of the victims referred in the last two years were aged between 25 to 44, but there was an increase identified in the 19-24 age group (5%) and 25-34 age group (3%) in comparison to 2010-2011 and 2011-2012 data.



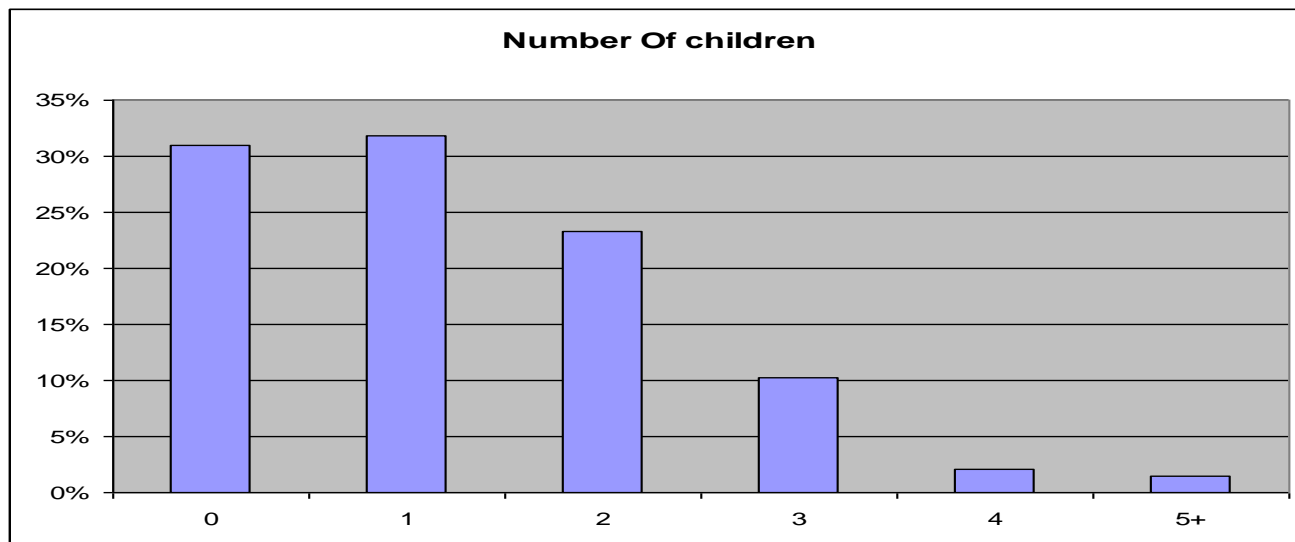
3.7 As shown above most of the referrals were received from Bromley Police. The number of referrals increased from Victim Support Service during year 2011-12. This may be in part attributable to a change in the format of the forms and the increase in the options available to those completing these forms.



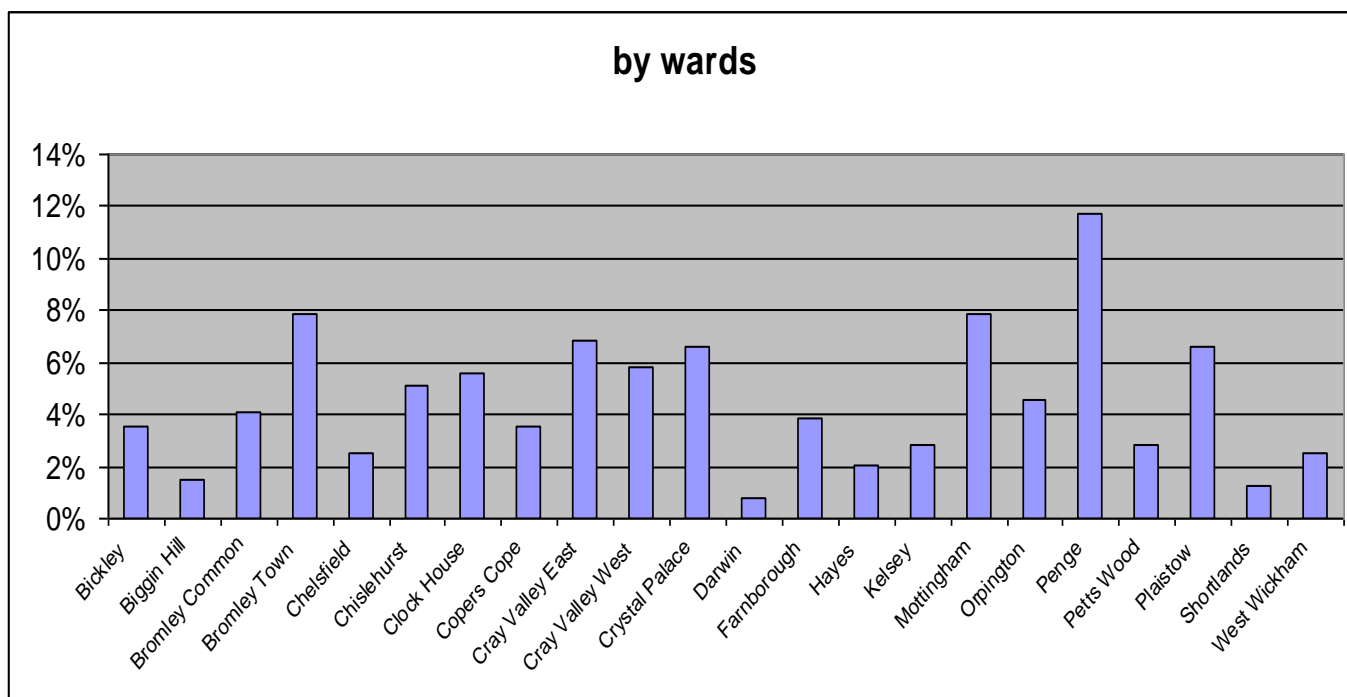
3.8 The chart above shows most of the perpetrators were ex-partners or current husbands, but there was a slight increase identified by other family members/Others and also 25% of the victims were living with the perpetrators when they were referred to the One Stop shop service in year 2011/12.



3.9 The chart above illustrates the frequency of abusive incidents that occurred within 7 days.



3.10 This analysis demonstrates that 79% of the abuse happened in a household where there was at least one child in the family.



3.11 This analysis demonstrates that 12% of the victims live in Penge ward. This distribution is almost identical in 2010-2011 and 2011-2012. This reflects the population density across the borough.